

▼ Shown from left to right: RRH3010, RRH1001, RRH6010



- Relief valves prevent damage in case of over-pressurisation
- Baked enamel finish for increased corrosion resistance
- Collar threads enable easy fixturing (except RRH1001 and RRH1508)
- Double-acting version for fast retraction
- Nickel-plated, floating center tube increases product life
- Hollow plunger allows for both pull and push forces
- CR400 coupler and dust cap included on all models
- Plunger wiper reduces contamination, extending cylinder life.

## Versatility in Testing, Maintenance and Tensioning Applications



### Ultra-Lightweight Aluminium Cylinders

If you need a higher cylinder capacity-to-weight-ratio the lightweight **RRH-Series** are the perfect choice.

Page: 18



### Gauges

Minimize the risk of overloading and ensure long, dependable service from your equipment. Refer to the System Components

Section for a full range of gauges.

Page: 127



### Saddles

All RRH-Series cylinders are equipped with smooth saddles. See table at next page for optional threaded saddles and all dimensional information.

Page: 37

▼ Double-acting hollow plunger cylinders are applied for bridge launching systems.



Cylinder Capacity	Stroke (mm)	Model Number	Max. Cylinder Capacity (kN)		Cylinder Effective Area (cm <sup>2</sup> )		Oil Capacity (cm <sup>3</sup> )	
			Advance	Retract	Advance	Retract	Advance	Retract
30	178	RRH307	326	213	46,6	30,4	829	541
	258	RRH3010	326	213	46,6	30,4	1202	784
60	89	RRH603	576	380	82,3	54,2	733	482
	166	RRH606	576	380	82,3	54,2	1366	900
	257	RRH6010	576	380	82,3	54,2	2115	1393
95	38	RRH1001	931	612	133,0	87,4	505	333
	76	RRH1003	931	612	133,0	87,4	1011	666
	153	RRH1006	931	612	133,0	87,4	2035	1337
	257	RRH10010	931	612	133,0	87,4	3420	2246
145	203	RRH1508	1429	718	204,1	102,6	4144	2083

# Double-Acting, Hollow Plunger Cylinders



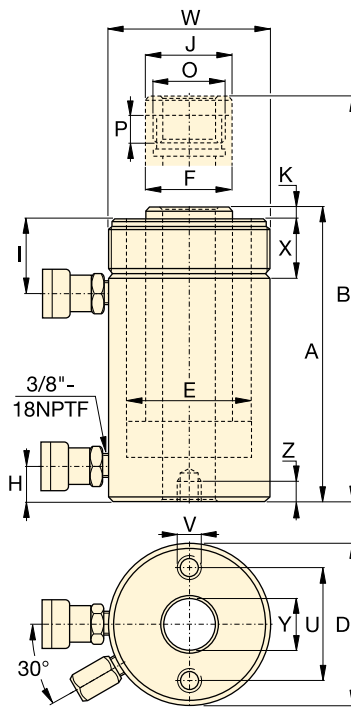
## Hoses

Enerpac offers a complete line of high quality hydraulic hoses. To ensure the integrity of your system, specify only Enerpac hydraulic hoses.

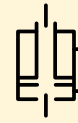
Page: 128

Optional Threaded Hollow Saddles					
Saddle Type	Cylinder Model Number	Saddle Model Nr.	Saddle Dimensions (mm)		
			A	B	C
Threaded Hollow	RRH307, 3010	HP3015	63	1¼" - 7	9
	RRH603, 606, 6010	HP5016	91	1½" - 5½	12
	RRH1001, 1003, RRH1006, 10010	HP10016	126	2½" - 8	13

Smooth hollow saddles are standard on all RRH-models.



## RRH Series



Capacity:

**30 - 145 ton**

Stroke:

**38 - 258 mm**

Center Hole Diameter:

**33,3 - 79,2 mm**

Maximum Operating Pressure:

**700 bar**



### Pump Selection

A double-acting cylinder must be powered by a pump with a 4-way valve.

Page: 121

### Base Mounting Hole Dimensions (mm)

Model Number	Bolt Circle U	Thread		Thread Depth Z
		V		
RRH307	92,2	¾" - 16 UNC		15,7
RRH3010	92,2	¾" - 16 UNC		15,7
RRH603	130,0	½" - 13 UNC		14,0
RRH606	130,0	½" - 13 UNC		14,0
RRH6010	130,0	½" - 13 UNC		14,0
RRH1001	177,8	⅝" - 11 UNC		19,0
RRH1003	177,8	⅝" - 11 UNC		19,0
RRH1006	177,8	⅝" - 11 UNC		19,0
RRH10010	177,8	⅝" - 11 UNC		19,0
RRH1508	213,4	⅝" - 11 UNC		23,0

Coll. Height	Ext. Height	Out. Dia.	Cyl. Bore Dia.	Plgr. Dia.	Cyl. Base to Adv. Port	Cyl. Top to Return Port	Saddle Dia.	Saddle Protr. fr. Plgr.	Thread	Plunger Thread Length	Collar Thread	Collar Thread Length	Center Hole Dia.	Weight	Model Number
A	B	D	E	F	H	I	J	K	O	P	W	X	Y	(kg)	
330	508	114	88,9	63,5	25	60	63	9	1 <sup>13</sup> / <sub>16</sub> " - 16	22	4 <sup>1</sup> / <sub>2</sub> " - 12	42	33,3	21	RRH307
431	689	114	88,9	63,5	25	60	63	9	1 <sup>13</sup> / <sub>16</sub> " - 16	22	4 <sup>1</sup> / <sub>2</sub> " - 12	42	33,3	27	RRH3010
247	336	159	123,9	91,9	31	66	91	12	2 <sup>3</sup> / <sub>4</sub> " - 16	19	6 <sup>1</sup> / <sub>4</sub> " - 12	48	53,8	28	RRH603
323	489	159	123,9	91,9	31	66	91	12	2 <sup>3</sup> / <sub>4</sub> " - 16	19	6 <sup>1</sup> / <sub>4</sub> " - 12	48	53,8	35	RRH606
438	695	159	123,9	91,9	31	66	91	12	2 <sup>3</sup> / <sub>4</sub> " - 16	19	6 <sup>1</sup> / <sub>4</sub> " - 12	48	53,8	45	RRH6010
165	203	212	165,1	127,0	38	44	126	12	4" - 16	25	-	-	79,2	33	RRH1001
254	330	212	165,1	127,0	38	85	126	12	4" - 16	25	8 <sup>3</sup> / <sub>8</sub> " - 12	60	79,2	61	RRH1003
342	495	212	165,1	127,0	38	85	126	12	4" - 16	25	8 <sup>3</sup> / <sub>8</sub> " - 12	60	79,2	79	RRH1006
460	717	212	165,1	127,0	38	85	126	12	4" - 16	25	8 <sup>3</sup> / <sub>8</sub> " - 12	60	79,2	106	RRH10010
349	552	247	190,5	152,4	38	60	127	4	4 <sup>1</sup> / <sub>4</sub> " - 12	25	-	-	79,2	111	RRH1508



**ETOP**  
creat să reziste

Republica Moldova, MD-2023  
mun. Chișinău, str. Uzinelor 90  
+ /373/ 67 707 707  
office@etop.md  
www.etop.md