

# ARP 75

## LIGHT TANDEM VIBRATORY ROLLER

EU STAGE V / U.S. EPA TIER 4 FINAL

### APPLICATIONS

- Medium and large compaction projects
- Transport construction: highways, municipal roads, airfields
- Industrial zones
- Parking areas
- Downtowns



### PRODUCTIVITY

#### Variable compaction output

Two-stage vibratory system enables adjustment to the particular jobsite.

#### Smooth rolling

Advanced drive system prevents sudden starts and stops during machine operation.

### ERGONOMICS

#### Platform and cab

Spacious and quiet, with 360° visibility.

#### Operator station

Provides high comfort and safety.

### SERVICEABILITY

#### Minimized downtime

Heavy duty components and robust construction.

#### Reduced maintenance

Extended service intervals; easy-to-reach maintenance points.

### SUSTAINABILITY

#### ECODrop

Improved efficiency, reduced use of fluids.

#### Advanced technologies

Including monitoring and measuring systems, enhance efficiency, productivity, and enable precise documentation.

### OPTIONAL EQUIPMENT

- Battery disconnection switch - Mechanical
- A/C
- Additional documentation printed
- Additional lights 360° LED
- Additional lights cab LED
- Ammann Documentation Syst. ADS
- Ammann Documentation Syst. ADS RTK
- AmmannCare Gold
- AmmannCare Silver
- Back-up alarm
- Back-up alarm adaptive
- Certificate of origin
- Color scheme customer
- Compaction measuring system ACE<sup>force</sup>
- Compaction measuring system ACE<sup>pro</sup>
- Cooling box
- Drum steps foldable front
- Drum steps foldable front/rear
- Edge cutter 45° (diagonal)
- Edge cutter 45° (front right)
- Edge cutter 45° (rear left)
- Engine automatic stop
- Fire extinguisher
- GPS Q-Compaction ACE
- GPS Q-Compaction Preparation
- GPS Q-Compaction Preparation ACE
- Hydraulic oil biodegradable
- Infrared thermometer
- Maintenance Kit 1000h
- Maintenance Kit 2000h
- Maintenance Kit 500h
- Radio DAB
- Rear view camera
- Registration plate holder incl. light
- Slow moving vehicle triangle
- Sun films on cab glasses
- Sun visor
- Telematics Preparation
- Telematics ServiceLink Plus
- Toolset
- Transport remote control
- Warning beacon green LED
- Warning beacon LED
- Water tank filling from ground

### STANDARD EQUIPMENT

- 2 amplitudes / Multiple frequencies
- Ammann color design and decals
- ATC - Ammann Traction Control
- Battery disconnection switch - Electronic
- Cab ROPS/FOPS
- Centralized draining points
- Double drum version: Front and rear drive and vibration
- Double drum version: Two split steerable drums
- ECODrop
- Electronic drive lever with intelligent functions
- FTS (Finger-Tip-Steering)
- Measuring points central
- Multi-functional 10inch touchable display for machine control and overview
- On-board diagnostics
- Operator's station with one drive lever (RH)
- Pressure water sprinkling with interval switch, 3 stage filtration and 2 pumps
- Road lights (headlights, rearlights, turning signals, brake lights)
- Slideable, 270° rotatable and horizontally adjustable driver's seat with armrests
- Standard hydraulic oil
- Tilttable scrapers
- Variable working width (Off-set steering modes)
- CE conformity
- Telematics Readiness

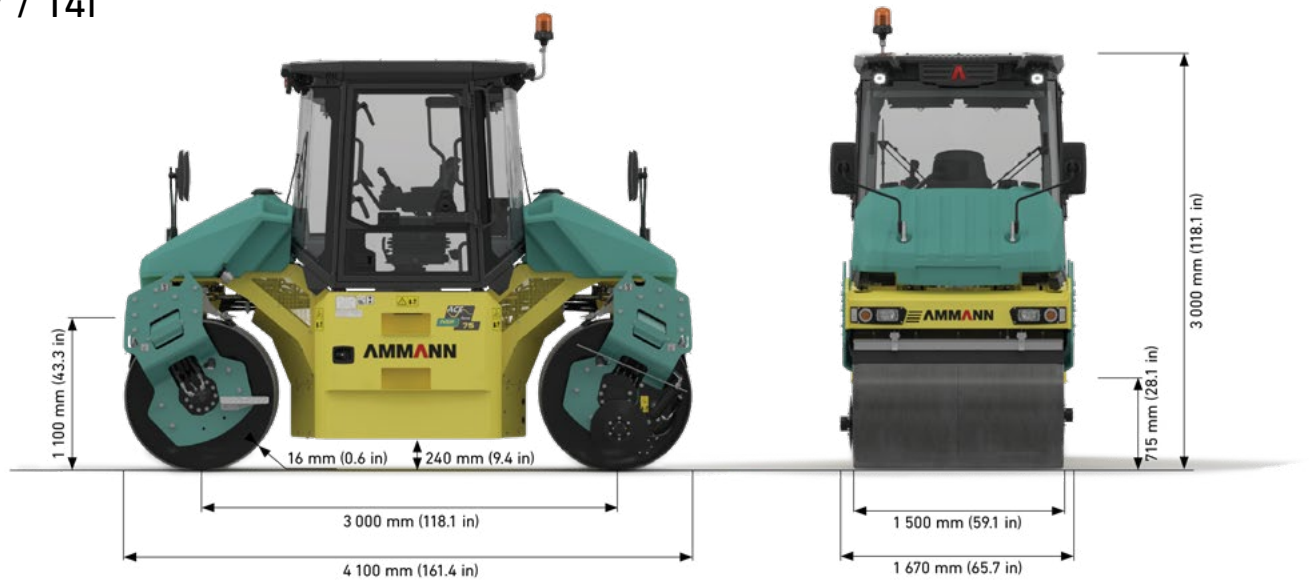


**ETOP**  
creat să reziste

Republica Moldova, MD-2023  
mun. Chișinău, str. Uzinelor 90  
+ /373/ 67 707 707  
office@etop.md  
www.etop.md

# ARP 75

StV / T4f



## WEIGHT & OPERATING CHARACTERISTICS

OPERATING WEIGHT CECE	7 540 kg (16,623 lb)
OPERATING WEIGHT MAX.	8 990 kg (19,820 lb)
STATIC LINEAR LOAD AVG.	25,1 kg/cm (140,6 lb/in)
MAX. WORKING SPEED	10 km/h (6.2 MPH)
GRADEABILITY WITHOUT VIBRATION	30%
GRADEABILITY WITH VIBRATION	25%
TURNING RADIUS (INNER)	2 940 mm (115.7 in)
DRUM OFFSET	1 220 mm (48 in)

## ENGINE

MANUFACTURER	Kubota
ENGINE TYPE	V3307-CR-T
ENGINE SPEED	2400 rpm
POWER OUTPUT SAE J1995	55,4 kW / 74HP
EMISSION STAGE	EU Stage V / U.S. EPA Tier 4 Final
EXHAUST GAS AFTER-TREATMENT	EGR+DOC+DPF

## COMPACTION FORCES

FREQUENCY I	38–48 Hz (2,280–2,880 vpm)
FREQUENCY II	45–55 Hz (2,700–3,300 vpm)
CENTRIFUGAL FORCE I	58–92 kN (13,039–20,682 lbf)
CENTRIFUGAL FORCE II	47–70 kN (10,566–15,737 lbf)
AMPLITUDE I	0,68 mm (0.027 in)
AMPLITUDE II	0,39 mm (0.015 in)

## MISCELLANEOUS

BRAKES OPERATING	Hydrostatic
BRAKES PARKING	Multiple-disc spring brake
BRAKES EMERGENCY	Multiple-disc spring brake
FUEL TANK CAPACITY	160 l (42.3 gal)
WATER TANK CAPACITY	900 l (237.8 gal)
TYPE OF WATERING	Pressure
HYDRAULIC TANK CAPACITY	84 l (22.2 gal)
STEERING ANGLE	±24°
OSCILLATION ANGLE	±4°
BATTERY VOLTAGE	12V
BATTERY CAPACITY	120 Ah

## MAXIMUM RECOMMENDED COMPACTED LIFT THICKNESS AT OPTIMAL WORKING CONDITIONS

ROCKFILL	–
SAND / GRAVEL	350 mm (13.8 in)
MIXED SOILS	250 mm (9.8 in)
SILT	–
CLAY	–
STABILISATION	180 mm (7.1 in)
ASPHALT	130 mm (5.1 in)

# ARP 75C

## LIGHT TANDEM VIBRATORY ROLLER

EU STAGE V / U.S. EPA TIER 4 FINAL

### APPLICATIONS

- Medium and large compaction projects
- Transport construction: highways, municipal roads, airfields
- Industrial zones
- Parking areas
- Downtowns



### PRODUCTIVITY

#### Variable compaction output

Two-stage vibratory system enables adjustment to the particular jobsite.

#### Smooth rolling

Advanced drive system prevents sudden starts and stops during machine operation.

### ERGONOMICS

#### Platform and cab

Spacious and quiet, with 360° visibility.

#### Operator station

Provides high comfort and safety.

### SERVICEABILITY

#### Minimized downtime

Heavy duty components and robust construction.

#### Reduced maintenance

Extended service intervals; easy-to-reach maintenance points.

### SUSTAINABILITY

#### ECODrop

Improved efficiency, reduced use of fluids.

#### Advanced technologies

Including monitoring and measuring systems, enhance efficiency, productivity, and enable precise documentation.

### OPTIONAL EQUIPMENT

- Battery disconnection switch - Mechanical
- A/C
- Additional documentation printed
- Additional lights 360° LED for combi
- Additional lights cab LED
- Ammann Documentation Syst. ADS
- Ammann Documentation Syst. ADS RTK
- AmmannCare Gold
- AmmannCare Silver
- Back-up alarm
- Back-up alarm adaptive
- Certificate of origin
- Color scheme customer
- Compaction measuring system ACE<sup>force</sup>
- Compaction measuring system ACE<sup>pro</sup>
- Cooling box
- Drum steps foldable rear
- Edge cutter 45° (rear left)
- Engine automatic stop
- Fire extinguisher
- GPS Q-Compaction ACE
- GPS Q-Compaction Preparation
- GPS Q-Compaction Preparation ACE
- Hydraulic oil biodegradable
- Infrared thermometer
- Maintenance Kit 1000h
- Maintenance Kit 2000h
- Maintenance Kit 500h
- Radio DAB
- Rear view camera
- Registration plate holder incl. light
- Slow moving vehicle triangle
- Sun films on cab glasses
- Sun visor
- Telematics Preparation
- Telematics ServiceLink Plus
- Toolset
- Transport remote control
- Warning beacon green LED
- Warning beacon LED
- Water tank filling from ground

### STANDARD EQUIPMENT

- 2 amplitudes / Multiple frequencies
- Ammann color design and decals
- ATC - Ammann Traction Control
- Battery disconnection switch - Electronic
- Cab ROPS/FOPS
- Centralized draining points
- Combi-version: Front and rear drive and rear vibration
- Combi-version: Incl. emulsion-spraying and thermal aprons
- Combi-version: one split drum / 4 tyres in front
- ECOdrop
- Electronic drive lever with intelligent functions
- FTS (Finger-Tip-Steering)
- Measuring points central
- Multi-functional 10inch touchable display for machine control and overview
- On-board diagnostics
- Operator's station with one drive lever (RH)
- Pressure water sprinkling with interval switch, 3 stage filtration and 2 pumps
- Road lights (headlights, rearlights, turning signals, brake lights)
- Slideable, 270° rotatable and horizontally adjustable driver's seat with armrests
- Standard hydraulic oil
- Tilttable scrapers
- Variable working width (Off-set steering modes)
- CE conformity
- Telematics Readiness

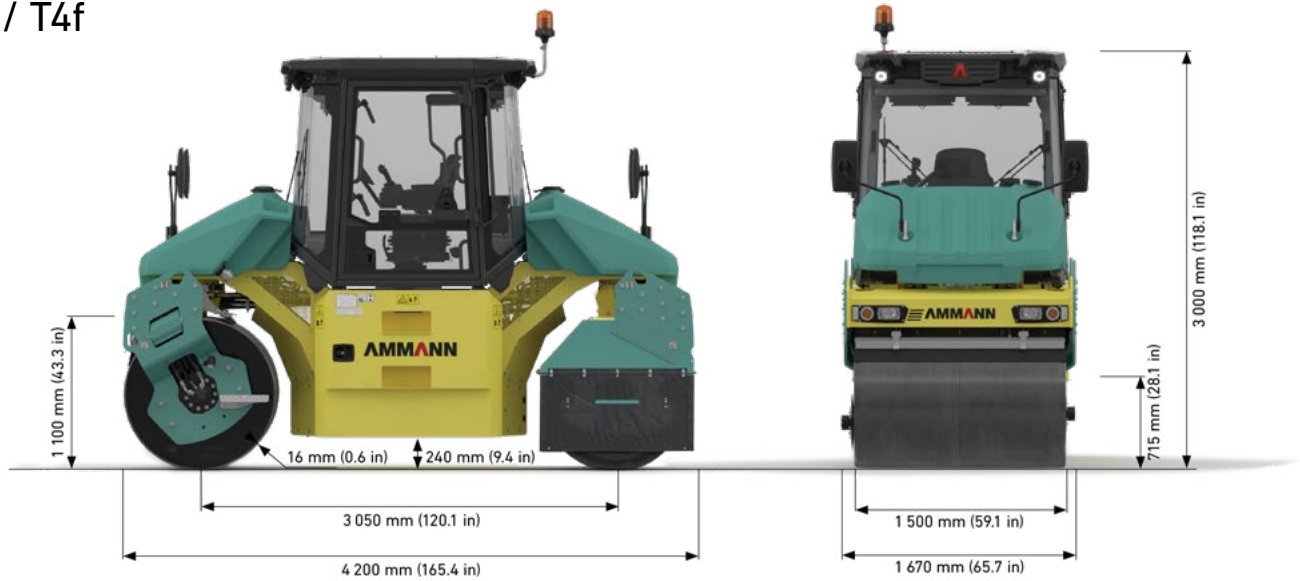


**ETOP**  
creat să reziste

Republica Moldova, MD-2023  
mun. Chișinău, str. Uzinelor 90  
+ /373/ 67 707 707  
office@etop.md  
www.etop.md

# ARP 75C

StV / T4f



## WEIGHT & OPERATING CHARACTERISTICS

OPERATING WEIGHT CECE	7 360 kg (16,226 lb)
OPERATING WEIGHT MAX.	8 670 kg (19,114 lb)
STATIC LINEAR LOAD AVG.	23,6 kg/cm (132.2 lb/in)
MAX. WORKING SPEED	10 km/h (6.2 MPH)
GRADEABILITY WITHOUT VIBRATION	30%
GRADEABILITY WITH VIBRATION	25%
TURNING RADIUS (INNER)	2 940 mm (115.7 in)
DRUM OFFSET	1 220 mm (48 in)

## ENGINE

MANUFACTURER	Kubota
ENGINE TYPE	V3307-CR-T
ENGINE SPEED	2400 rpm
POWER OUTPUT SAE J1995	55,4 kW / 74HP
EMISSION STAGE	EU Stage V / U.S. EPA Tier 4 Final
EXHAUST GAS AFTER-TREATMENT	EGR+DOC+DPF

## COMPACTION FORCES

FREQUENCY I	38–48 Hz (2,280–2,880 vpm)
FREQUENCY II	45–55 Hz (2,700–3,300 vpm)
CENTRIFUGAL FORCE I	58–92 kN (13,039–20,682 lbf)
CENTRIFUGAL FORCE II	47–70 kN (10,566–15,737 lbf)
AMPLITUDE I	0,68 mm (0.027 in)
AMPLITUDE II	0,39 mm (0.015 in)

## MISCELLANEOUS

BRAKES OPERATING	Hydrostatic
BRAKES PARKING	Multiple-disc spring brake
BRAKES EMERGENCY	Multiple-disc spring brake
FUEL TANK CAPACITY	160 l (42.3 gal)
WATER TANK CAPACITY	900 l (237.8 gal)
TYPE OF WATERING	Pressure
HYDRAULIC TANK CAPACITY	84 l (22.2 gal)
STEERING ANGLE	±24°
OSCILLATION ANGLE	±4°
BATTERY VOLTAGE	12V
BATTERY CAPACITY	120 Ah
NUMBER OF WHEELS	4 psc
SIZE OF TIRES	11,00x20,00 16PR
WHEEL LOAD	885 kg (1,951 lb)

## MAXIMUM RECOMMENDED COMPACTED LIFT THICKNESS AT OPTIMAL WORKING CONDITIONS

ROCKFILL	-
SAND / GRAVEL	350 mm (13.8 in)
MIXED SOILS	250 mm (9.8 in)
SILT	-
CLAY	-
STABILISATION	180 mm (7.1 in)
ASPHALT	130 mm (5.1 in)



**ETOP**  
creat să reziste

Republica Moldova, MD-2023  
mun. Chişinău, str. Uzinelor 90  
+ /373/ 67 707 707  
office@etop.md  
www.etop.md