

ARP 95

PIVOT-STEER TANDEM ROLLER

EU STAGE V / U.S. EPA TIER 4 FINAL

APPLICATIONS

- Medium and large jobsites
- Transport construction (municipal and town roads, motorways, airfields)
- Building construction (houses and industrial zones)



PRODUCTIVITY

Pivot steering with split drums

Enables higher manoeuvrability on jobsites and reduces surface shear forces.

Ammann Traction Control

Increases machine traction on difficult jobsites and makes machine loading easier.

Multiple vibration frequencies

Varied vibratory settings increase or decrease compaction output for precise compaction control and higher quality.

ERGONOMICS

Fingertip steering (FTP)

Ergonomic steering system makes the machine operator-friendly and easy to control.

Multi-functional display

Central display is located in front of the operator for optimal machine control and monitoring.

Exceptional operator visibility

Perfect all-around machine visibility to maximise safety on the jobsite.

SERVICEABILITY

Tilttable cab and wide engine doors

Exceptional accessibility to all major components and service points.

Maintenance-friendly design

High focus on easy maintenance and robust design to minimise downtime.

Ground access to service and maintenance points

Fast and easy machine servicing; no additional tools required.

OPTIONAL EQUIPMENT

- Additional Documentation Printed
- Additional Lights 360° LED
- Additional Mirrors Rear
- Additional Storage Rack Cab Version
- Ammann Documentation System (ADS)
- Ammann Documentation System (ADS-RTK)
- Air Condition
- Back-up Alarm
- Back-up Alarm Adaptive
- Certificate of Origin
- Color Scheme Customer
- Compaction Measuring System ACE^{force}
- Compaction Measuring System ACE^{pro}
- Edge Cutter 45° (Diagonal)
- Edge Cutter 45° (Front Right)
- Edge Cutter 45° (Front Right/Front Left)
- Edge Cutter 60° (Diagonal)
- Edge Cutter 60° (Front Right)
- Edge Cutter 60° (Front Right/Front Left)
- Fire Extinguisher
- GPS Q-Compaction ACE
- GPS Q-Compaction Preparation
- GPS Q-Compaction Preparation ACE
- Hydraulic Oil Biodegradable
- Chip Spreader Ammann
- Chip Spreader Preparation
- Infrared Thermometer
- Measuring Points Central
- Overseas Shipping Preparation
- Plug 12V
- Radio FM
- Rear View Camera
- Rear View Camera for Chip Spreader
- Registration plate holder
- Safety Cover Fan and alternator
- Maintenance Kit 2000h
- Maintenance Kit 500h
- Slow Moving Vehicle Triangle
- Sun Films on Cab Glasses
- Telematics ServiceLink Plus
- Telematics System Preparation
- Telematics Trackunit
- Toolset
- Warning Beacon LED
- Water Tank Filling from Ground
- Working Lights Cabin LED

STANDARD EQUIPMENT

- 2 amplitudes / Multiple frequencies
- Ammann color design and decals
- ATC - Ammann Traction Control
- Battery disconnection switch
- Cab ROPS/FOPS
- CE conformity
- Centralized draining points
- Double drum version: Front and rear drive and vibration
- Double drum version: Two split steerable drums
- ECOdrop
- Electronic drive lever with intelligent functions
- FTS (Finger-Tip-Steering)
- Multi-functional display for machine control and overview
- On-board diagnostics
- Operator's station with one drive lever (RH)
- Pressure water sprinkling with interval switch, 3 stage filtration and 2 pumps
- Road lights (headlights, rearlights, turning signals, brake lights)
- Slideable, 270° rotatable and horizontally adjustable driver's seat with armrests
- Standard hydraulic oil
- Telematics Readiness
- Tilttable scrapers
- Variable working width (Off-set steering modes)



ETOP
creat să reziste

Republica Moldova, MD-2023
mun. Chişinău, str. Uzinelor 90
+ /373/ 67 707 707
office@etop.md
www.etop.md

ARP 95

StV / T4f



mm (in)

WEIGHT & OPERATING CHARACTERISTICS

	ARP 95	ARP 95 (ACE ^{PRO})
OPERATING WEIGHT CECE	9930 kg (21 890 lb)	9970 kg (21 980 lb)
OPERATING WEIGHT MAX.	11 505 kg (25 360 lb)	11 545 kg (25 450 lb)
STAT. LIN. LOAD OF FRONT DRUM	26.6 kg/cm (149 lb/in)	29.9 kg/cm (167.4 lb/in)
STAT. LIN. LOAD OF REAR DRUM	29.5 kg/cm (165 lb/in)	29.5 kg/cm (165 lb/in)
TRAVEL SPEED	10 km/h (6.21 MPH)	10 km/h (6.21 MPH)
GRADEABILITY WITH VIBRATION	25 %	25 %
GRADEABILITY WITHOUT VIBRATION	30 %	30 %
TURNING RADIUS INNER (EDGE)	3065 mm (120.7 in)	3065 mm (120.7 in)
TURNING RADIUS OUTER (CONTOUR)	4785 mm (188.4 in)	4785 mm (188.4 in)
OSCILLATION ANGLE	±6°	±6°
ANGLE OF STEERING	±25°	±25°

ENGINE

MANUFACTURER	Deutz TCD3.6 L4
POWER OUTPUT ISO 14396	74.4 kW (100 HP)
NOMINAL SPEED	2200 min ⁻¹ (RPM)
EXHAUST GAS AFTER-TREATMENT	EGR+DOC+DPF+SCR
EMISSION CLASS	EU Stage V / U.S. EPA Tier 4 Final

MISCELLANEOUS

DRUM OFFSET	1390 mm (54.7 in)
MAX WORKING OFFSET MODE	3070 mm (120.8 in)
BRAKES OPERATING	Hydrostatic
BRAKES PARKING	Mechanical multiple-disc
BRAKES EMERGENCY	Mechanical multiple-disc
FUEL TANK CAPACITY	165 l (43.6 gal)
DEF (ADBLUE) TANK	10 l (2.6 gal)
WATER TANK CAPACITY	800 l (211.3 gal)
BATTERY / CAPACITY	24 V / 2x55 Ah

COMPACTION FORCES

	ARP 95	ARP 95 (ACE ^{PRO})
FREQUENCY I	*38–42Hz (2280–2520 VPM)	42 Hz (2520 VPM)
FREQUENCY II	*42–52 Hz (2520–3120 VPM)	52 Hz (3120 VPM)
AMPLITUDE I	*0.65 mm (0.026 in)	0.65 mm (0.026 in)
AMPLITUDE II	*0.28 mm (0.01 in)	0.28 mm (0.01 in)
CENTRIFUGAL FORCE I	*74–91 kN (16636–20457 lbf)	91 kN (20 457.6 lbf)
CENTRIFUGAL FORCE II	*39–60 kN (8767–13488 lbf)	60 kN (13 488.5 lbf)
FREQUENCY ACE ^{PRO} MIN.	–	37 Hz (2220 VPM)
FREQUENCY ACE ^{PRO} MAX.	–	52 Hz (3120 VPM)
AMPLITUDE ACE ^{PRO} MAX.	–	0.85 mm (0.033 in)
CENTRIF. FORCE ACE ^{PRO} MAX.	–	110 kN (24 729 lbf)

* Standard & ACE^{force} drum

MAXIMUM RECOMMENDED COMPACTED LIFT THICKNESS AT OPTIMAL WORKING CONDITIONS

ROCKFILL	N/A
SAND / GRAVEL	400 mm (16 in)
MIXED SOILS	300 mm (12 in)
SILT	N/A
CLAY	N/A
STABILISATION	200 mm (8 in)
ASPHALT	140 mm (5.5 in)

ARP 95C

PIVOT-STEER TANDEM ROLLER

EU STAGE V / U.S. EPA TIER 4 FINAL

APPLICATIONS

- Medium and large jobsites
- Transport construction (municipal and town roads, motorways, airfields)
- Building construction (houses and industrial zones)



PRODUCTIVITY

Pivot steering with split drums

Enables higher manoeuvrability on jobsites and reduces surface shear forces.

Ammann Traction Control

Increases machine traction on difficult jobsites and makes machine loading easier.

Multiple vibration frequencies

Varied vibratory settings increase or decrease compaction output for precise compaction control and higher quality.

ERGONOMICS

Fingertip steering (FTP)

Ergonomic steering system makes the machine operator-friendly and easy to control.

Multi-functional display

Central display is located in front of the operator for optimal machine control and monitoring.

Exceptional operator visibility

Perfect all-around machine visibility to maximise safety on the jobsite.

SERVICEABILITY

Tiltable cab and wide engine doors

Exceptional accessibility to all major components and service points.

Maintenance-friendly design

High focus on easy maintenance and robust design to minimise downtime.

Ground access to service and maintenance points

Fast and easy machine servicing; no additional tools required.

OPTIONAL EQUIPMENT

- Additional Documentation Printed
- Additional Lights 360° LED for Combi
- Additional Mirrors Rear
- Additional Storage Rack Cab Version
- Ammann Documentation System (ADS)
- Ammann Documentation System (ADS-RTK)
- Air Condition
- Back-up Alarm
- Back-up Alarm Adaptive
- Certificate of Origin
- Color Scheme Customer
- Compaction Measuring System ACE^{force}
- Compaction Measuring System ACE^{pro}
- Edge Cutter 45° (Diagonal)
- Edge Cutter 45° (Front Right)
- Edge Cutter 45° (Front Right/Front Left)
- Edge Cutter 60° (Diagonal)
- Edge Cutter 60° (Front Right)
- Edge Cutter 60°
- Edge Cutter 60° (Front Right/Front Left)
- Fire Extinguisher
- GPS Q-Compaction ACE
- GPS Q-Compaction Preparation
- GPS Q-Compaction Preparation ACE
- Hydraulic Oil Biodegradable
- Chip Spreader Ammann
- Chip Spreader Preparation
- Infrared Thermometer
- Measuring Points Central
- Overseas Shipping Preparation
- Plug 12V
- Radio FM
- Rear View Camera
- Rear View Camera for Chip Spreader
- Registration plate holder
- Safety Cover Fan and alternator
- Maintenance Kit 2000h
- Maintenance Kit 500h
- Slow Moving Vehicle Triangle
- Sun Films on Cab Glasses
- Telematics ServiceLink Plus
- Telematics System Preparation
- Telematics Trackunit
- Toolset
- Warning Beacon LED
- Water Tank Filling from Ground
- Working Lights Cabin LED

STANDARD EQUIPMENT

- 2 amplitudes / Multiple frequencies
- Ammann color design and decals
- ATC - Ammann Traction Control
- Battery disconnection switch
- Cab ROPS/FOPS
- CE conformity
- Centralized draining points
- Combi-version: Front and rear drive and front vibration
- Combi-version: Incl. Emulsion-spraying and Thermal aprons
- Combi-version: One split drum / 4 tyres in rear
- ECOdrop
- Electronic drive lever with intelligent functions
- FTS (Finger-Tip-Steering)
- Multi-functional display for machine control and overview
- On-board diagnostics
- Operator's station with one drive lever (RH)
- Pressure water sprinkling with interval switch, 3 stage filtration and 2 pumps
- Road lights (headlights, rearlights, turning signals, brake lights)
- Slideable, 270° rotatable and horizontally adjustable driver's seat with armrests
- Standard hydraulic oil
- Telematics Readiness
- Tiltable scrapers
- Variable working width (Off-set steering modes)

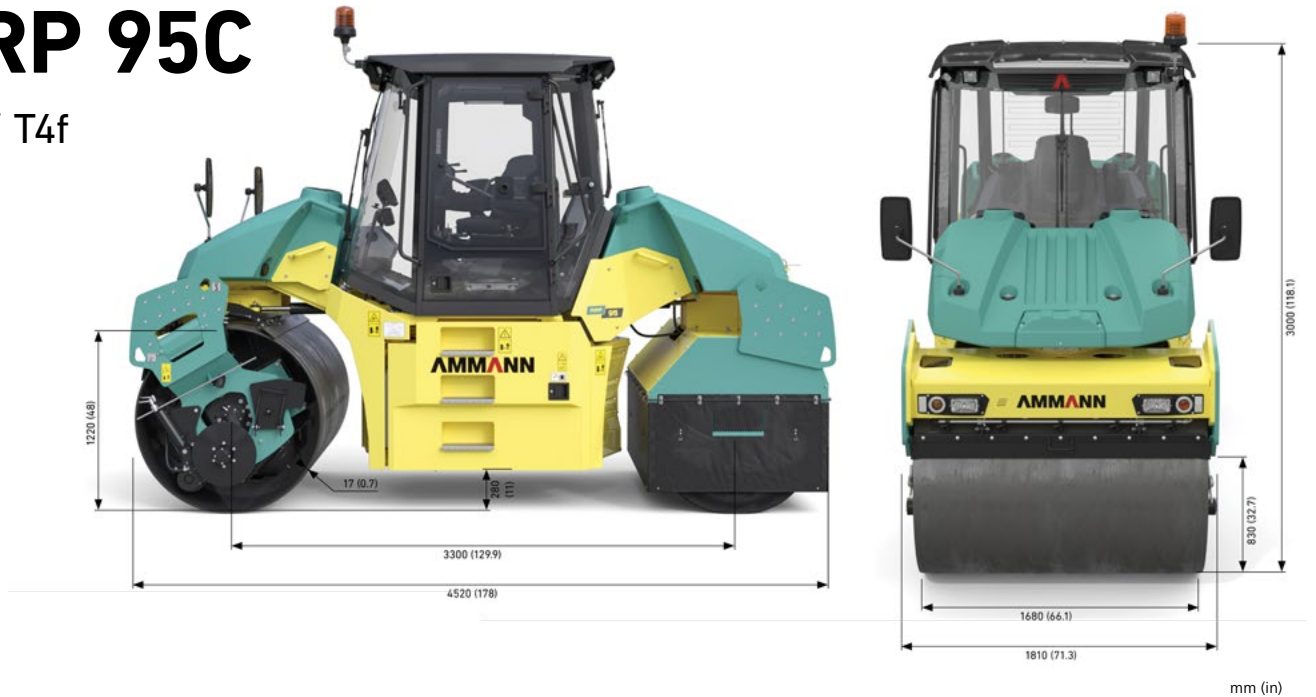


ETOP
creat să reziste

Republica Moldova, MD-2023
mun. Chişinău, str. Uzinelor 90
+ /373/ 67 707 707
office@etop.md
www.etop.md

ARP 95C

StV / T4f



mm (in)

WEIGHT & OPERATING CHARACTERISTICS

	ARP 95C	ARP 95C (ACE ^{PRO})
OPERATING WEIGHT CECE	9480 kg (20 900 lb)	9520 kg (20 990 lb)
OPERATING WEIGHT MAX.	11 075 kg (24 420 lb)	11 115 kg (24 500 lb)
STAT. LIN. LOAD OF FRONT DRUM	29.5 kg/cm (165.3 lb/in)	29.8 kg/cm (166.7 lb/in)
TRAVEL SPEED	10 km/h (6.21 MPH)	10 km/h (6.21 MPH)
GRADEABILITY WITH VIBRATION	25 %	25 %
GRADEABILITY WITHOUT VIBRATION	30 %	30 %
TURNING RADIUS INNER (EDGE)	3065 mm (120.7 in)	3065 mm (120.7 in)
TURNING RADIUS OUTER (CONTOUR)	4785 mm (188.4 in)	4785 mm (188.4 in)
OSCILLATION ANGLE	±6°	±6°
ANGLE OF STEERING	±25°	±25°

ENGINE

MANUFACTURER	Deutz TCD3.6 L4
POWER OUTPUT ISO 14396	74.4 kW (100 HP)
NOMINAL SPEED	2200 min ⁻¹ (RPM)
EXHAUST GAS AFTER-TREATMENT	EGR+DOC+DPF+SCR
EMISSION CLASS	EU Stage V / U.S. EPA Tier 4 Final

MISCELLANEOUS

PNEU WIDTH	1610 mm (63.4 in)
DRUM OFFSET	1355 mm (53.4 in)
MAX WORKING OFFSET MODE	3035 mm (119.5 in)
BRAKES OPERATING	Hydrostatic
BRAKES PARKING	Mechanical multiple-disc
BRAKES EMERGENCY	Mechanical multiple-disc
SIZE OF TYRES	11,00x20,00 16PR
FUEL TANK CAPACITY	165 l (43.6 gal)
DEF (ADBLUE) TANK	10 l (2.6 gal)
WATER TANK CAPACITY	800 l (211.3 gal)
BATTERY / CAPACITY	24 V / 2x55 Ah

COMPACTION FORCES

	ARP 95C	ARP 95C (ACE ^{PRO})
FREQUENCY I	*38–42 Hz (2280–2520 VPM)	–
FREQUENCY II	*42–52 Hz (2520–3120 VPM)	–
AMPLITUDE I	*0.65 mm (0.026 in)	–
AMPLITUDE II	*0.28 mm (0.01 in)	–
CENTRIFUGAL FORCE I	*74–91 kN (16 636–20 457.6 lbf)	–
CENTRIFUGAL FORCE II	*36–60 kN (13 488.5 lbf)	–
FREQUENCY ACE ^{PRO} MIN.	–	37 Hz (2220 VPM)
FREQUENCY ACE ^{PRO} MAX.	–	52 Hz (3120 VPM)
AMPLITUDE ACE ^{PRO} MAX.	–	0.85 mm (0.033 in)
CENTRIF. FORCE ACE ^{PRO} MAX.	–	110 kN (24 729 lbf)

* Standard & ACE^{force} drum

MAXIMUM RECOMMENDED COMPACTED LIFT THICKNESS AT OPTIMAL WORKING CONDITIONS

ROCKFILL	N/A
SAND / GRAVEL	300 mm (12 in)
MIXED SOILS	200 mm (8 in)
SILT	N/A
CLAY	N/A
STABILISATION	150 mm (6 in)
ASPHALT	120 mm (4.7 in)



ETOP
creat să reziste

Republica Moldova, MD-2023
mun. Chişinău, str. Uzinelor 90
+ /373/ 67 707 707
office@etop.md
www.etop.md