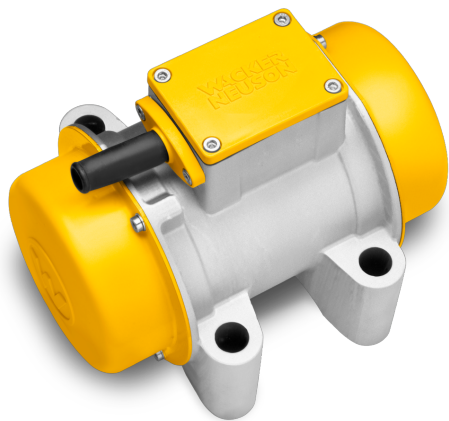




**WACKER
NEUSON**
all it takes!



AR 43/6/250

External vibrators for consolidation of prefabricated concrete factories

Maximum reliability and safety

The AR43 external vibrator performs with maximum reliability and safety in the toughest operating conditions - even in 24-hour continuous applications. This is due to the low vibration and heat-resistant windings of the electric motor (plastic casing, Class H up to 180°C) as well as the extremely robust special bearings. It has a long service life and minimal maintenance requirements. Perfect for application with precast concrete elements.

Highlights

- Sturdy design

Technical Data

■ Electrical - Output Details

Nominal current	2.00 A
Nominal voltage	250.0 V
Nominal frequency	200.0 Hz
Nominal power [P]	0.50 KW
Phase	3.0 ~

■ Mechanical - Output Details

Centrifugal force	10 kN
Vibrations	6,000.0 1/min
Vibrations (Hz)	100.0 Hz
Centrifugal force max.	10.02 kN

■ Mechanical Details

Length	223.0 mm
Width	190.0 mm

Height	164.0 mm
Weight	8.44 kg
Unbalanced mass/side pos1	8.0
Unbalanced mass/side pos2	0.0

■ Motor

Motor type	Asynchronous motor
------------	--------------------

■ Environment Data

Protection class	I / Protective earthing
Degree of protection	IP67

■ Electrical System

Breaker Switch On/Off	no
Operating indicator	No
Adjusting frequency	No
Integrated transformer	No



ETOP
creat să reziste

Republica Moldova, MD-2023
mun. Chișinău, str. Uzinelor 90
+ /373/ 67 707 707
office@etop.md
www.etop.md