

S12000 400V 50Hz #CONN

THE COMPLETE PETROL PACKAGE



S 12000 has an exceptional quality and strength. It responds to all EEC markets requirements and it's a rare product, with such power, to complying with the EU regulations on noise emission (2000/14/CE). S 12000 offers all the features of a top class product: A powerful and economical engine, a strong and modern design and a long-run easy filling fuel tank. Perfect for intensive use, this generator is equipped with a control panel which allows to integrate many accessories and options for better comfort and for optimal command.

Main Features

Frequency	Hz	50
Voltage	V	400/230
Power factor	cos ϕ	0.8
Phase		3

Power Rating

Emergency Standby Power ESP	kVA	13.9
Emergency Standby Power ESP	kW	11.1
Continuous power COP	kVA	11.8
Continuous power COP	kW	9.5

Single Phase Power Rating

Single phase Maximum Power	kVA	5.6
Single phase continuous power COP	kVA	5.0

Ratings definition (According to standard ISO8528 1:2005)



ETOP
creat să reziste

Republica Moldova, MD-2023
mun. Chişinău, str. Uzinelor 90
+ /373/ 67 707 707
office@etop.md
www.etop.md

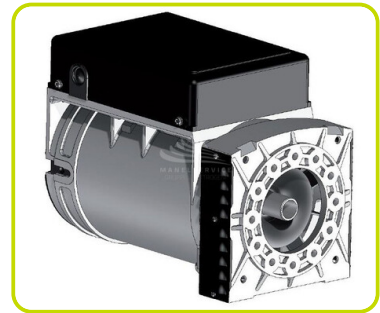
Engine specifications

Engine Brand		Honda
Model		GX630
[50Hz] Exhaust emission level		Stage V
Engine cooling system		Air
Displacement	cm ³	688
Aspiration		Natural
Operating Speed-Nominal	rpm	3000
Speed governor		Mechanical
Fuel		Petrol
Oil capacity	l	1.9
Starting system		Electric



Alternator Specifications

Alternator		Mecc Alte
Class		H
IP protection		23
Poles		2
Frequency	Hz	50
Voltage	V	400
Voltage regulation system		Compound



Dimensional data

Length	(L) mm	960
Width	(W) mm	641
Height	(H) mm	667
Dry weight	kg	165
Fuel tank capacity	l	24

Autonomy

Fuel consumption at 75% of Load	l/h	4.16
Fuel consumption at 100% of Load	l/h	5.64
Running time at 75% of load	h	5.77
Running time at 100% of load	h	4.26

Noise level

Guaranteed noise level (LWA)	dB(A)	96
Noise pressure level @ 7 m	dB(A)	68



ETOP
creat să reziste

Republica Moldova, MD-2023
mun. Chișinău, str. Uzinelor 90
+ /373/ 67 707 707
office@etop.md
www.etop.md

GENSET CONTROL PANELS (CONN)

Mounted on the genset and complete of: instrumentation, control, protection of the generating set and sockets.



COMMANDS:

- Start selector switch with key: OFF - ON - START
- Pushbutton Choke
- CONNector for AMF/RSS (Accessory available)

PROTECTIONS:

- Magneto Thermal Protection
- Oil Guard

SOCKET TYPE

SCHUKO 230V 16A IP54	1
2P+T CEE 230V 16A IP44	2
3P+N+T CEE 400V 16A IP44	1



ACCESSORIES CONTROL PANEL

AMF - AUTOMATIC CONTROL PANEL (CONN)

This accessory allows to control all the generator functions. It's built to monitor single phase or three phase with neutral systems in alternate current; it transfers the load on generator when the mains voltage is faulty. Conversely, as soon as AMF system detects the power grid, it stops the generator.

Equipment:

- Control and protection unit (DGT)
- Phase detector
- Contactor with interlock
- Battery maintener
- Acoustic alarm
- 8 meters control wiring (with CONNector)
- External start stop capability
- Emergency stop button

Instrumentation (DGT):

- Mains voltage
- Genset voltage
- Frequency meter
- Hour meter

Alarm & Shutdowns:

- Generators voltage out of limits
- Battery Voltage out of limits
- Low oil Pressure
- Fail to start
- External shutdown

RSS - REMOTE START / STOP (CONN)

RSS Remote start/stop wireless with CONNector (max Distance 90m)



ETOP
creat să reziste

Republica Moldova, MD-2023
mun. Chişinău, str. Uzinelor 90
+ /373/ 67 707 707
office@etop.md
www.etop.md

ACCESSORIES

TRANSPORTATION KIT

- With fix handles



- With folding handles

