

# S12000 400V 50Hz #AVR #CONN #DPP

## THE COMPLETE PETROL PACKAGE



S 12000 has an exceptional quality and strength. It responds to all EEC markets requirements and it's a rare product, with such power, to complying with the EU regulations on noise emission (2000/14/CE). S 12000 offers all the features of a top class product: A powerful and economical engine, a strong and modern design and a long-run easy filling fuel tank. Perfect for intensive use, this generator is equipped with a control panel which allows to integrate many accessories and options for better comfort and for optimal command.

### Main Features

Frequency	Hz	50
Voltage	V	400/230
Power factor	cos $\phi$	0.8
Phase		3

### Power Rating

Emergency Standby Power ESP	kVA	13.9
Emergency Standby Power ESP	kW	11.1
Continuous power COP	kVA	11.8
Continuous power COP	kW	9.5

### Single Phase Power Rating

Single phase Maximum Power	kVA	5.6
Single phase continuous power COP	kVA	5.0

Ratings definition (According to standard ISO8528 1:2005)



**ETOP**  
creat să reziste

Republica Moldova, MD-2023  
mun. Chişinău, str. Uzinelor 90  
+ /373/ 67 707 707  
office@etop.md  
www.etop.md

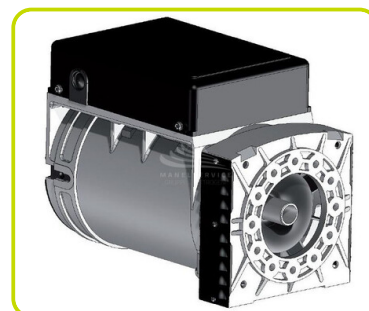
### Engine specifications

Engine Brand		Honda
Model		GX630
[50Hz] Exhaust emission level		Stage V
Engine cooling system		Air
Displacement	cm <sup>3</sup>	688
Aspiration		Natural
Operating Speed-Nominal	rpm	3000
Speed governor		Mechanical
Fuel		Petrol
Oil capacity	l	1.9
Starting system		Electric



### Alternator Specifications

Alternator		Mecc Alte
Type		Brushes
Class		H
IP protection		23
Poles		2
Frequency	Hz	50
Voltage	V	400
Voltage regulation system		Electronic
Standard AVR		ASR



### Dimensional data

Length	(L) mm	960
Width	(W) mm	641
Height	(H) mm	667
Dry weight	kg	165
Fuel tank capacity	l	24

### Autonomy

Fuel consumption at 75% of Load	l/h	4.23
Fuel consumption at 100% of Load	l/h	5.64
Running time at 75% of load	h	5.67
Running time at 100% of load	h	4.26

### Noise level

Guaranteed noise level (LWA)	dB(A)	96
Noise pressure level @ 7 m	dB(A)	68



**ETOP**  
creat să reziste

Republica Moldova, MD-2023  
mun. Chișinău, str. Uzinelor 90  
+ /373/ 67 707 707  
office@etop.md  
www.etop.md

## GENSET CONTROL PANELS (CONN DPP)



Mounted on the genset and complete of: instrumentation, control, protection of the generating set and sockets.

### COMMANDS:

- Start selector switch with key: OFF - ON - START
- Pushbutton Choke
- CONNector for AMF/RSS (Accessory available)

### INSTRUMENTATION:

- Voltmeter
- Hours-counter

### PROTECTIONS:

- Magneto Thermal Protection
- Differential protection
- Oil Guard

### SOCKET TYPE

SCHUKO 230V 16A IP54	1
2P+T CEE 230V 16A IP44	2
3P+N+T CEE 400V 16A IP44	1



## ACCESSORIES CONTROL PANEL

### **AMF - AUTOMATIC CONTROL PANEL (CONN)**

This accessory allows to control all the generator functions. It's built to monitor single phase or three phase with neutral systems in alternate current; it transfers the load on generator when the mains voltage is faulty. Conversely, as soon as AMF system detects the power grid, it stops the generator.

#### **Equipment:**

- Control and protection unit (DGT)
- Phase detector
- Contactor with interlock
- Battery maintener
- Acoustic alarm
- 8 meters control wiring (with CONNector)
- External start stop capability
- Emergency stop button

#### **Instrumentation (DGT):**

- Mains voltage
- Genset voltage
- Frequency meter
- Hour meter

#### **Alarm & Shutdowns:**

- Generators voltage out of limits
- Battery Voltage out of limits
- Low oil Pressure
- Fail to start
- External shutdown



### **RSS - REMOTE START / STOP (CONN)**

RSS Remote start/stop wireless with CONNector (max Distance 90m)



**ETOP**  
creat să reziste

Republica Moldova, MD-2023  
mun. Chişinău, str. Uzinelor 90  
+ /373/ 67 707 707  
office@etop.md  
www.etop.md

## ACCESSORIES

### TRANSPORTATION KIT

- With fix handles



- With folding handles

