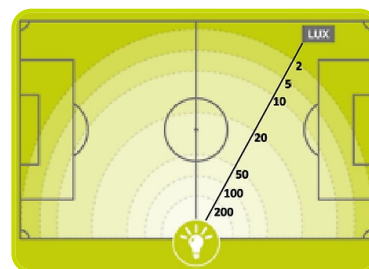


## LSW-3T [LED]



### Lighting Features

Lighting Type		LED
Frequency	Hz	50
Voltage	V	230
Number of Lamps	nr	4
Nominal Lamps Power (Total)	W	1280
Lighting Capacity	Lumen	188000
Lit up area	m <sup>2</sup>	4100



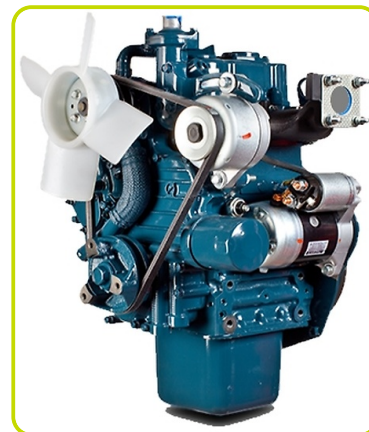
### Telescopic mast

Material		Galvanized steel
Maximum height	m	8.0
Lifting System		Manual
Type of rotation system		Manual
Anti-rotation system		Mechanical
Maximum rotation angle	deg	340
Adjustable stabilizers	n°	4
Maximum wind stability	Km/h	80



### Engine specifications

Engine Brand		Kubota
Model		Z482
[50Hz] Exhaust emission level		Unregulated
Operating Speed-Nominal	rpm	1500
Engine cooling system		Water
Nr. of cylinder and disposition		2 in line
Oil capacity	l	2
Fuel		Diesel
Starting system		Electric



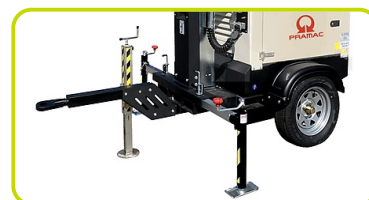
### Alternator Specifications

Type		Brushless
Class		H
Frequency	Hz	50
Voltage	V	230
Phase (s)		1
Continuous power 125°/40°	kVA	3.5



### Mobility

Type of Mobility		Site Trailer
Number of Axles	nr	1
Drawbar Connection		Din eye 45mm



### Dimensional data

Length	mm	2480
Width	mm	1310
Height	mm	2450
Length - operating condition	mm	2480
Width - operating condition	mm	2400
Height - operating condition (mast and outriggers extended)	mm	8000
Dry weight	kg	650



### Autonomy

Fuel tank capacity	l	120
Fuel tank type		Bunded tank
Running time	h	200



### Noise level

Guaranteed noise level (LWA)	dB(A)	85
------------------------------	-------	----



**ETOP**  
creat să reziste

Republica Moldova, MD-2023  
mun. Chișinău, str. Uzinelor 90  
+ /373/ 67 707 707  
office@etop.md  
www.etop.md

## Control Panel

Mounted and integrated in the canopy, for monitoring, control and protection of the Light Tower.

### CONTROL SECTION

- Starting key
- Preheater signal lamp
- Emergency stop button (external)
- Hour meter
- Fuel gauge
- Low fuel level signal lamp
- Low oil pressure signal lamp
- Battery charge signal lamp



### POWER SECTION

- Residual current circuit breaker with overcurrent protection
- Circuit breaker for lamps switch



### SOCKET TYPE

2P+T CEE 230V 16A IP44

1



**ETOP**  
creat să reziste

Republica Moldova, MD-2023  
mun. Chișinău, str. Uzinelor 90  
+ /373/ 67 707 707  
office@etop.md  
www.etop.md