

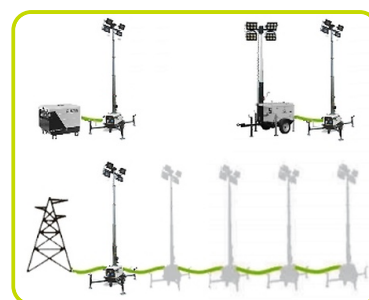
CLT [LED]



The CLT is a mobile light tower which can be powered by an external power source like a power generator, the main or another light tower with built-in generator.

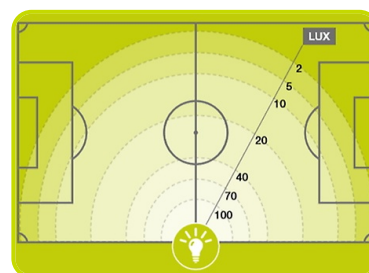
Linkable model: the main feature of the CLT model is that up to 5 CLT LED can be connected in series to a single power source, providing an high illumination area.

Easy handling: Thanks to the practical manual hand trolley, the light weight and the new jockey wheel, a single operator can handle the CLT quickly and safely in every kind of working area.



Lighting Features

Lighting Type		LED
Frequency	Hz	50/60
Voltage	V	230/240
Number of Lamps	nr	4
Nominal Lamps Power (Total)	W	960
Lighting Capacity	Lumen	139000
Lit up area	m2	2700
Input Plug 2P+T CEE 230V 16A IP67	nr	1
Circuit Breaker for lamps switch	nr	4
Outlet socket 2P+T CEE 230V 16A IP67	nr	1



ETOP
creat să reziste

Republica Moldova, MD-2023
mun. Chişinău, str. Uzinelor 90
+ /373/ 67 707 707
office@etop.md
www.etop.md

Telescopic mast

Material	Galvanized steel	
Maximum height	m	6.7
Lifting System	Manual	
Type of rotation system	Manual	
Anti-rotation system	Mechanical	
Maximum rotation angle	deg	340
Adjustable stabilizers	n°	4
Maximum wind stability	Km/h	80

Mobility

Type of Mobility	Hand Trolley
------------------	--------------

Dimensional data

Length	mm	1230
Width	mm	780
Height	mm	2110
Length - operating condition	mm	1870
Width - operating condition	mm	1460
Height - operating condition (mast and outriggers extended)	mm	6700
Dry weight	kg	250

