

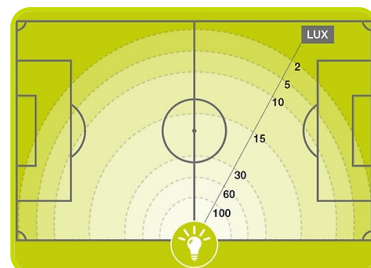
MLT-2 [LED]



One of the smallest mobile lighting towers in the range, the MLT2 is equipped with 4x240 W high efficiency LED floodlights. This model is equipped with hand trolley for easy transportation and can be equipped with two different built-in generators: Yanmar diesel or Honda petrol.

Lighting Features

Lighting Type		LED
Frequency	Hz	50/60
Voltage	V	230/240
Number of Lamps	nr	4
Nominal Lamps Power (Total)	W	960
Lighting Capacity	Lumen	139000
Lit up area	m ²	2100
Input Plug 2P+T CEE 230V 16A IP44	nr	1
Circuit Breaker for lamps switch	nr	4



ETOP
creat să reziste

Republica Moldova, MD-2023
mun. Chișinău, str. Uzinelor 90
+ /373/ 67 707 707
office@etop.md
www.etop.md

Telescopic mast

Material	Galvanized steel	
Maximum height	m	5.5
Lifting System	Manual	
Adjustable stabilizers	n°	2
Maximum wind stability	Km/h	80



Mobility

Type of Mobility	Hand Trolley
------------------	--------------

Dimensional data

Length	mm	1270
Width	mm	980
Height	mm	1870
Length - operating condition	mm	1470
Width - operating condition	mm	1420
Height - operating condition (mast and outriggers extended)	mm	5500

